

**COHLINE**®



**Innovative  
Line Systems  
for the  
Automotive Industry**



Shaping the future with you

# DEVELOPMENT

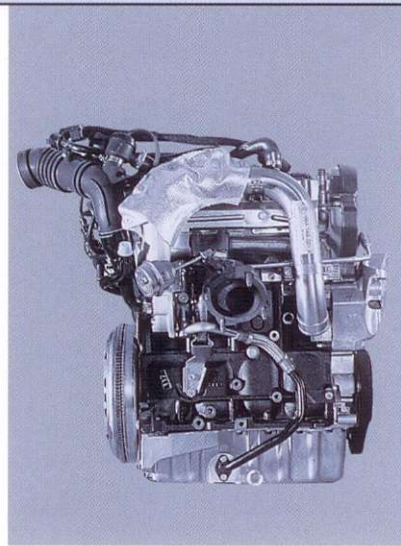
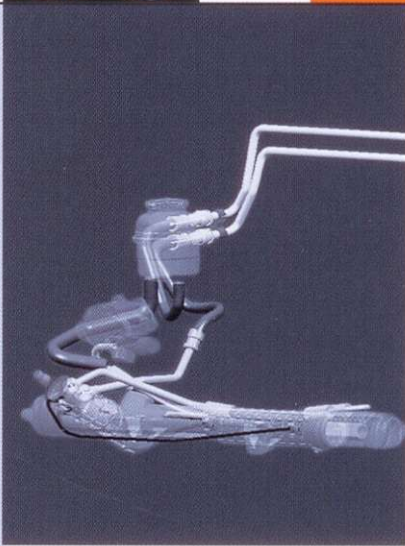
CURVE  
BACK  
ANALYSIS  
STANDARD  
MAGNIFY  
MULTIPLY  
LAYER  
DETAIL  
PLOT  
AXIS  
SOLID  
ERASE  
UTILITY  
GRAPH  
OPERATE  
LIBRARY  
MERGE  
FILE



The Cohline company group produces tube and hose line systems for the automotive, commercial vehicle, construction, agricultural machinery and motor industries as well as their system suppliers.

Since our foundation in the year 1932, we have been concentrating on this business. We have succeeded in proving our outstanding competence through pioneering developments and patents.

Even speak with us in the planning phase, since our ability to co-operate constructively as partners in the development stages is one of our company group's outstanding qualities. Through discussions with you, we will work out cost-effective solutions for the technological advancement in tough competition.



# DUCTION

## Fields of application:

### Fuel Systems, e.g.

- feed/return lines
- ventilation systems
- injection line sets
- regeneration lines

### Power Steering Systems, e.g.

- expansion hose lines
- suction hose lines
- return lines
- cooling coils made out of round and finned tube

### Engine Cooling, e.g.

- feed and return lines to the oil cooler or water cooler
- cooling coils made out of round and finned tube



## Optimal products through optimized processes

# PROD



### Transmission Oil Cooling

- feed and return lines to the oil cooler
- cooling coils made out of round and finned tube

### Brake Systems and ABS, e.g.

- pressure lines
- return lines

### Hydraulic Clutch Systems, e.g.

- pressure lines for feed and return cylinders

### Level Regulation, e.g.

- high pressure lines
- return lines

### Drive, e.g.

- lines for ASC/ASR
- lines for hydraulic differential locking device



## References:



Audi

PORSCHE

OPEL



VOLVO



VAUXHALL

DELPHI

Valeo

MODINE

## Materials:

### Metals

- steel and high-grade steel
- aluminium
- brass
- copper
- various alloys

### Plastics

- polyamid, PTFE

### Elastomers

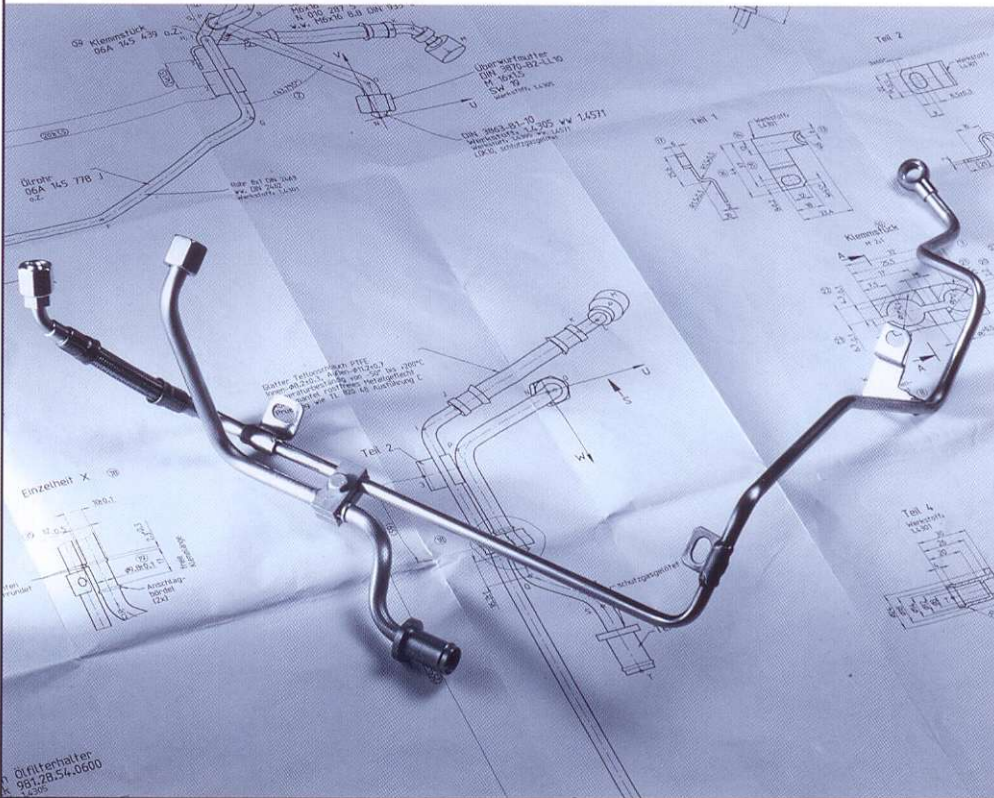
- e.g. NBR, CR, EPDM, CSM, FPM, AEM, ECO

**Various Combinations**  
from the above-mentioned  
materials.

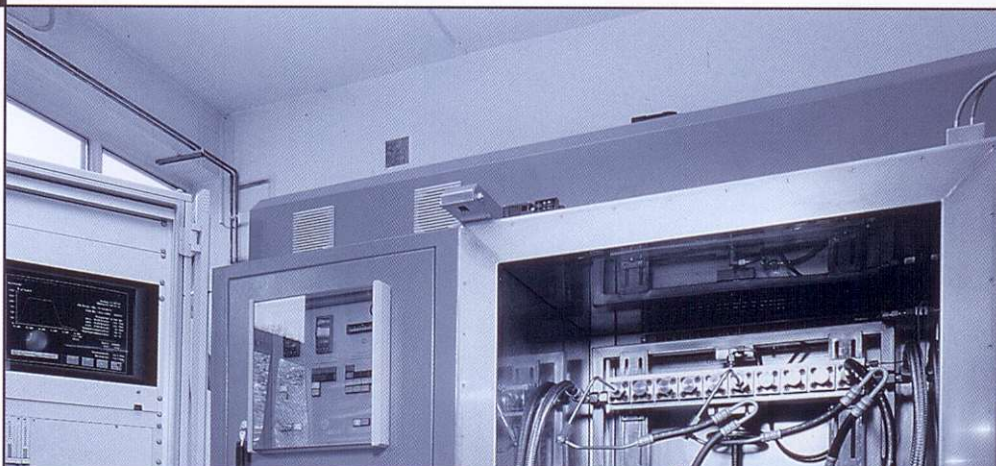


sses





**Avoiding mistakes instead of correcting mistakes**



COVA

